

**80 toneladas**

*Ideal para trabajos de:*

- *Incado de pilotes*
- *Dragado profundo*
- *Compactación dinámica*

\* *Certificación vigente*

\* *Seguros TREC, RC*



**983-285-955**



Mz.B Lt.32 A.P.V. Virgen de Guadalupe SMP



[comercial@grupodemap.com.pe](mailto:comercial@grupodemap.com.pe)



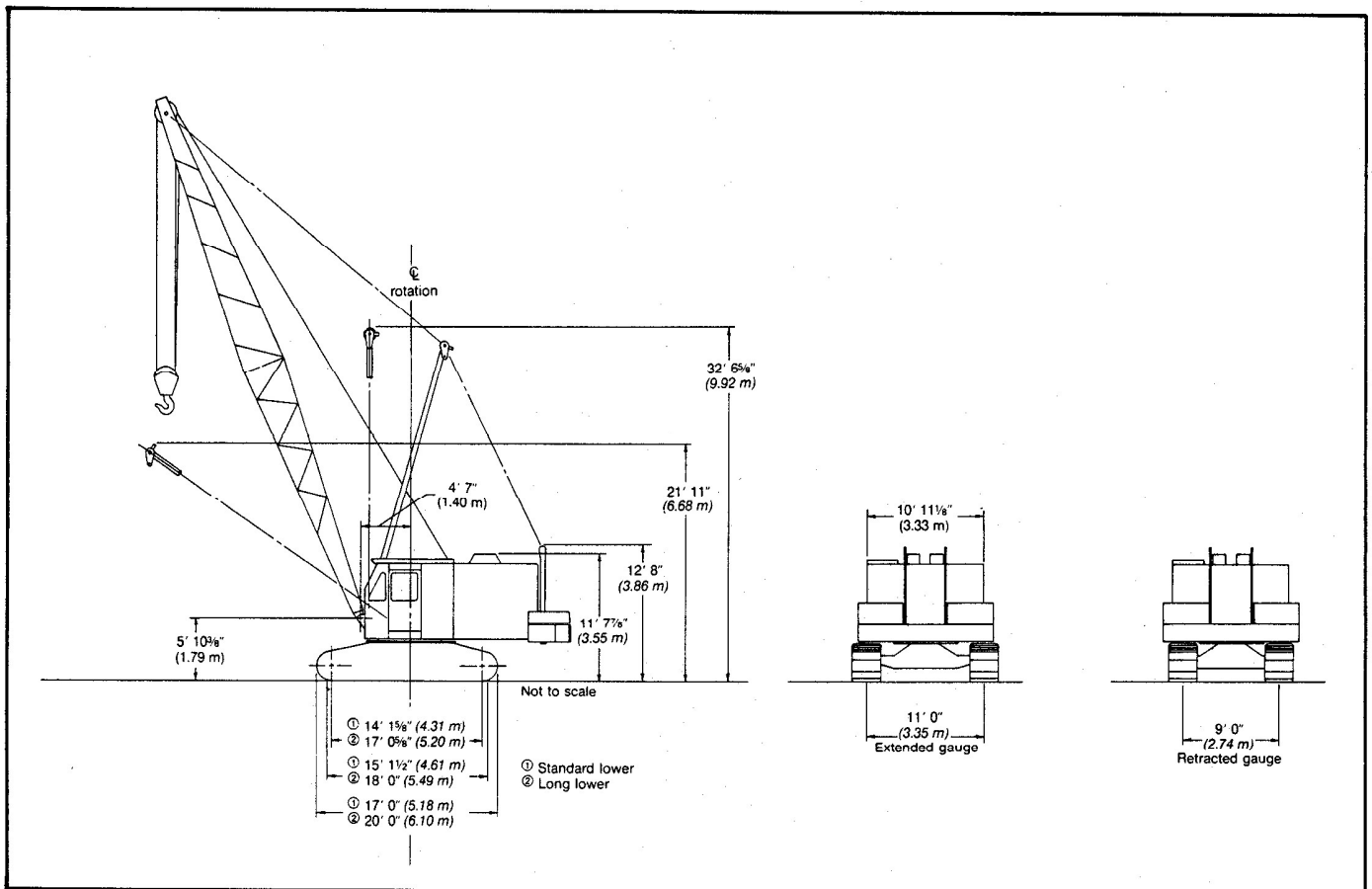
[www.grupodemap.com.pe](http://www.grupodemap.com.pe)

## General Specifications

Link-Belt® 80-ton (72.56 metric ton)

Wire rope crawler crane/excavator

# LS-318



General dimensions	Feet	meters
Basic boom length angle and tubular	50' 0"	15.24
Overall width with side frames extended:	—	—
32" (0.81 m) track shoes	13' 8"	4.16
36" (0.91 m) track shoes	14' 0"	4.27
44" (1.12 m) track shoes (not extended)	14' 8"	4.47
Overall width with side frames retracted:	—	—
32" (0.81 m) track shoes	11' 8"	3.56
36" (0.91 m) track shoes	12' 0"	3.66
Minimum ground clearance	1' 17/8"	0.35
Clearance under counterweight "A"	3' 9 9/16"	1.16
Clearance under counterweight "AB"	3' 9 9/16"	1.16
Overall width of counterweight	13' 6"	4.11

General dimensions	Feet	meters
Overall width less crawler side frames, counterweight and catwalk	12' 0"	3.66
Overall width for transport, less side frames and catwalks;	—	—
axles in line with upper	11' 0"	3.35
Width of cab less catwalks	10' 11 1/8"	3.33
Width of cab with catwalks both sides	15' 0"	4.57
Tailswing of counterweight "A"	15' 1 1/2"	4.61
Tailswing of counterweight "AB"	15' 1 1/2"	4.61
Overall height for transport:	—	—
Basic machine less crawler side frames	11' 6"	3.50
Basic revolving upperstructure only	9' 0"	2.74



983-285-955



Mz.B Lt.32 A.P.V. Virgen de Guadalupe SMP



comercial@grupodemap.com.pe



www.grupodemap.com.pe

# Grúa Celosía LinkBelt LS-318 80 ton

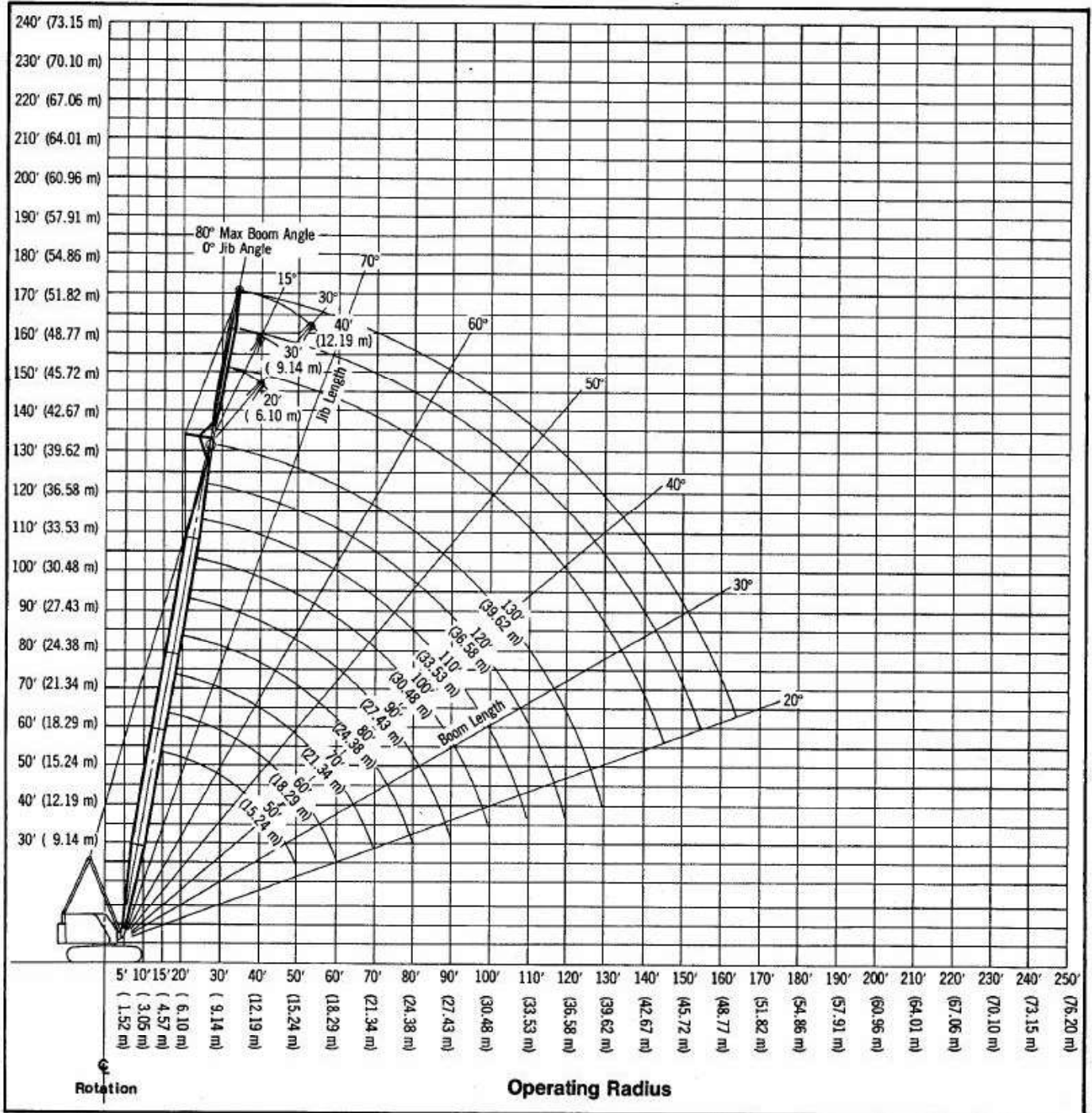
## LS-318 boom/jib working ranges

**Boom** — angle: 48° (1.22 m) wide, 48° (1.22 m) deep with open throat top section; with or without boom live mast.

**Jib** — angle: 20° x 24° (0.51 m x 0.61 m).

**Counterweight** — 32,000 lbs. (14 515 kg) "AB" only.

**Mounting** — crawler: 11' 0" (3.35 m) extended gauge, 17' 0" (5.18 m) overall length.



983-285-955



Mz.B Lt.32 A.P.V. Virgen de Guadalupe SMP



comercial@grupodemap.com.pe



www.grupodemap.com.pe

<b>Link-Belt</b> CRANES		<b>LS-318</b> Tabla de carga en Toneladas Metricas											
15.2 METROS DE PLUMA					18.3 METROS DE PLUMA					21.3 METROS DE PLUMA			
RADIO	ANGULO	CONTRAPESO A Y B			ANGULO	CONTRAPESO A Y B			ANGULO	CONTRAPESO A Y B			
		CONTRAPESO A	CONTRAPESO A Y B			CONTRAPESO A	CONTRAPESO A Y B			CONTRAPESO A	CONTRAPESO A Y B		
		360°	360°	FRONTAL		360°	360°	FRONTAL		360°	360°	FRONTAL	
3.7	81.5°	65.77	72.97	81.80									
4.0	80.3°	56.35	62.57	81.80									
4.3	79.1°	49.28	54.73	81.80	81°	49.32	54.77	81.80					
4.6	78°	43.69	48.60	81.80	80°	43.78	48.65	81.80					
4.9	76.8°	39.28	43.65	74.37	79°	39.32	43.69	74.50	80.6°	39.32	43.69	74.59	
5.2	75.6°	35.59	39.19	65.50	78.1°	35.63	39.64	65.63	79.8°	35.63	39.64	65.68	
5.5	74.4°	32.52	36.22	58.02	77.1°	32.57	36.26	58.56	78.9°	32.57	36.26	58.60	
5.8	73.2°	29.95	33.33	52.79	76.1°	29.95	33.38	52.88	78.1°	29.95	33.33	52.88	
6.1	72°	27.70	30.86	48.06	75.1°	27.75	30.90	48.11	77.3°	27.70	30.86	49.05	
7.6	65.9°	20.05	22.39	33.02	70.1°	20.09	22.43	33.06	73°	20.05	22.39	33.06	
9.1	59.4°	15.54	17.43	25.00	64.9°	15.59	17.43	25.05	68.7°	15.54	17.39	25.00	
10.7	52.5°	12.61	14.14	19.95	59.5°	12.61	14.14	20.00	64.2°	12.61	14.10	19.95	
12.2	44.9°	10.54	11.85	16.53	53.8°	10.54	11.85	16.53	59.6°	10.50	11.80	16.53	
15.2	24.7°	7.70	8.74	12.12	40.8°	7.75	8.74	12.16	49.5°	7.70	8.74	12.12	
18.3					22.5°	5.95	6.80	9.41	37.7°	5.95	6.76	9.37	
21.3									20.8°	4.73	5.41	7.57	

<b>Link-Belt</b> CRANES		<b>LS-318</b> Tabla de carga en Toneladas Metricas											
24.4 METROS DE PLUMA					27.4 METROS DE PLUMA					30.5 METROS DE PLUMA			
RADIO	ANGULO	CONTRAPESO A Y B			ANGULO	CONTRAPESO A Y B			ANGULO	CONTRAPESO A Y B			
		CONTRAPESO A	CONTRAPESO A Y B			CONTRAPESO A	CONTRAPESO A Y B			CONTRAPESO A	CONTRAPESO A Y B		
		360°	360°	FRONTAL		360°	360°	FRONTAL		360°	360°	FRONTAL	
5.2	81.1	35.88	39.92	66.18									
5.5	80.3	32.75	36.47	59.01									
5.8	79.6	30.12	33.57	53.30	80.8	30.07	33.52	53.25					
6.1	78.9	27.85	31.07	48.49	80.1	27.81	30.98	48.49	81.1	27.76	30.94	48.44	
7.6	75.2	20.14	22.50	33.29	76.9	20.09	22.45	33.25	78.2	20.00	22.36	33.20	
9.1	71.5	15.60	15.20	25.17	73.6	15.51	17.37	25.13	75.3	15.47	17.33	25.08	
10.7	67.7	12.66	14.15	20.05	70.2	12.56	14.06	20.00	72.3	12.52	13.74	19.96	
12.2	63.7	10.52	10.48	16.60	66.8	10.48	11.79	16.51	69.3	10.39	11.70	16.47	
15.2	55.4	7.71	8.75	12.16	59.7	7.67	8.66	12.11	63.0	7.58	8.57	12.07	
18.3	46.2	5.94	6.76	9.43	52.0	5.90	6.71	9.39	56.3	5.81	6.62	9.34	
21.3	35.1	4.72	5.40	7.58	43.4	4.67	5.35	7.53	49.1	4.58	5.26	7.48	
24.4	19.5	3.81	3.95	6.26	33.1	3.76	4.35	6.21	41.0	3.67	4.26	6.12	
27.4					18.4	3.04	3.58	5.17	31.3	2.99	3.54	5.13	
30.5									17.4	2.45	2.90	4.35	



# Grúa Celosía LinkBelt LS-318 80 ton



983-285-955



Mz.B Lt.32 A.P.V. Virgen de Guadalupe SMP



comercial@grupodemap.com.pe



www.grupodemap.com.pe

