

# 80HX Series

## TELESCOPIC BOOM LIFTS



*Alcance Extendido  
Mayor Versatilidad*



*Eje Oscilante para  
Terreno Irregular*



*Rendimiento y  
Confiablez*

**80HX**  
**80HX+6**



**983-285-955**



Mz.B Lt.32 A.P.V. Virgen de Guadalupe SMP



[comercial@grupodemap.com.pe](mailto:comercial@grupodemap.com.pe)

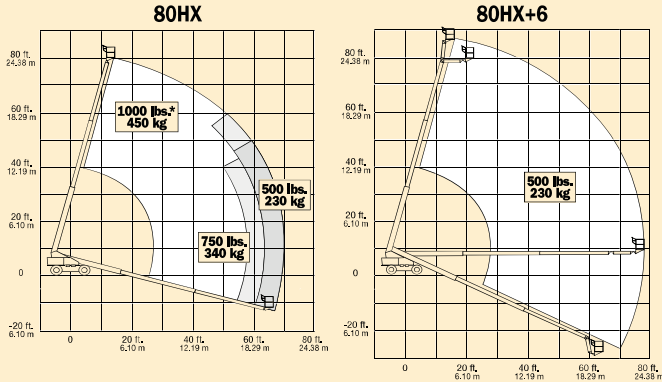


[www.grupodemap.com.pe](http://www.grupodemap.com.pe)

# Manlift JLG 80HX

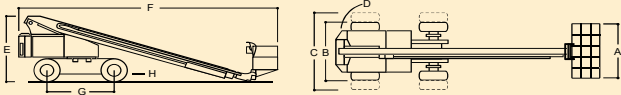
## Boom Telescópico 24.3 m

### JLG MODEL 80HX & 80HX+6



#### REACH SPECIFICATIONS

Platform Height (80HX)	80 ft. (24.38 m)
(80HX+6)	86 ft. (26.21 m)
Horizontal Outreach (80HX)	70 ft. 7 in. (21.51 m)
(80HX+6)	76 ft. 11 in. (23.44 m)
Below Ground Reach (80HX+6)	21 ft. 8 in. (6.6 m)
Swing	360° Continuous
Platform Capacity-Restricted (80HX)	1000/750 lbs. (450/340 kg)
Platform Capacity-Unrestricted (80HX)	500 lbs. (230 kg)
Platform Capacity (80HX+6)	500 lbs. (230 kg)
Platform Rotator	180° Hydraulic
Jib (Range of Articulation) (80HX+6)	6 ft. (1.83 m) 95° (+15, -80)



#### DIMENSIONAL DATA

A. Platform Size (80HX)	36 x 96 in. (0.91 x 2.44 m)
(80HX+6)	36 x 72 (0.91 x 1.83 m)
B. Overall Width (Axles Retracted)	8 ft. 2 in. (2.49 m)
C. Overall Width (Axles Extended)	10 ft. (3.05 m)
D. Tailswing	2 ft. 11 in. (89 cm)
E. Stowed Height	9 ft. 7 in. (2.92 m)
F. Stowed Length (80HX)	33 ft. 7 in. (10.24 m)
(80HX+6)	36 ft. 9 in. (11.2 m)
G. Wheelbase	10 ft. (3.05 m)
H. Ground Clearance	10 in. (25 cm)
Gross Vehicle Weight* (80HX)	31,800 lbs. (14,428 kg)
(80HX+6)	36,900 lbs. (16,742 kg)
Max. Ground Bearing Pressure (80HX)	103 psi (7.2 kg/cm <sup>2</sup> )
(80HX+6)	118 psi (8.3 kg/cm <sup>2</sup> )

#### CHASSIS

Drive Speed 2WD	3.5 mph (5.6 km/h)
Drive Speed 4WD	2.8 mph (4.5 km/h)
Gradeability 2WD/4WD	25%/35%
Turning Radius, Axles Retracted	
2WS (Inside/Outside)	17 ft. (5.18 m) / 23 ft. 8 in. (7.21 m)
4WS (Outside)	13 ft. 8 in. (4.17 m)
Turning Radius, Axles Extended	
2WS (Inside/Outside)	16 ft. 2 in. (4.93 m) / 25 ft. 4 in. (7.72 m)
4WS (Outside)	14 ft. 5 in. (4.39 m)
Axle Oscillation	8 in. (20 cm)
Tire Size/Type (80HX)	15 x 19.5 Lug Tread
(80HX+6)	15 x 19.5 Foam Filled

#### POWER SOURCE

Dual Fuel Engine	Ford LRG-425 70 hp (52 kW)
Diesel Engine	Deutz F4L912 70 hp (52 kW)
Fuel Tank Capacity	26 gal. (98 L)
Hydraulic Reservoir	55 gal. (208 L)
Auxiliary Power	12V DC

\*Certain options or country standards will increase weight

### PERFORMANCE FEATURES

#### Standard Features

Hydraulic Extendible Axles (Front & Rear)  
 36 x 96 in. (0.91 x 2.44 m) Platform  
 Inward Swinging Gate  
 180 Degree Hydraulic Platform Rotator  
 110V-AC Receptacle On Platform  
 5 Degree Tilt Indicator Light

Rim Protector Lug Tread Tires  
 12V-DC Auxiliary Power  
 Proportional Controls  
 Lifting/Tie Down Lugs  
 Hourmeter

#### Available Options

36 x 72 in. (0.91 x 1.83 m) Platform  
 Minimum Underhang Mount<sup>1</sup>  
 Platform Work Lights  
 1/2 in. (1.3 cm) Air Line to Platform  
 "Soft Touch" System 6 ft. (1.83 m)<sup>2</sup>  
 Four-Wheel Steer<sup>3</sup>  
 Foam Fill for Tires  
 2500W Generator  
 Head and Tail Lights  
 Tow Package  
 Front Chassis Jack  
 Proportional Telescope<sup>4</sup>  
 5 Degree Tilt Alarm  
 Travel Alarm  
 All Motion Alarm  
 Flashing Amber Beacon  
 Alarm Package<sup>5</sup>

43.5 lb. (19.73 kg) Propane Tank  
 Engine Distress Warning<sup>6</sup>  
 Cold Weather Start Kit (Ford)<sup>7</sup>  
 Cold Weather Start Kit (Deutz)<sup>8</sup>  
 Hostile Environment Kit<sup>9</sup>

1. Reduces platform height 18 in. (46 cm).
2. Available on 80HX+6 only.
3. Not available with oscillating axle.
4. Standard on 80HX+6. Includes 5 degree tilt, flashing amber beacon & all-motion alarm.
5. Includes flashing beacon & all-motion alarm.
6. Low oil pressure and high coolant temperature alarms.
7. Includes engine block heater, battery heater, oil manifold heater and oil tank heater.
8. Includes ether assist, battery heater, oil manifold heater and oil tank heater.
9. Includes console cover, boom wipers and cylinder bellows.

#### 80HX Boom Lift Advantages

- Optional oscillating axle provides a smoother ride and better traction for improved rough terrain drive performance
- Extendible axles help reduce stowed width for ease of transport
- Plate steel boom provides longer service life, minimal deflection
- Proportional controls for smoother drive, lift and swing functions
- Platform features a powered rotator for flexible positioning
- JLG's patented Extend-A-Reach 6 ft. (1.83 m) articulating boom section (80HX+6) provides "up & over" or "out & down" access

#### The JLG 1 & 5 Warranty

JLG Industries, Inc. backs our products with our exclusive "1 & 5" Warranty. We provide coverage on all products for one (1) full year, and cover all specified major structural components for five (5) full years. Due to continuous product improvements, we reserve the right to make specification and/or equipment changes without prior notification. This machine meets or exceeds applicable OSHA Regulations in 29 CFR 1910.67, 1926.453 and ANSI A92.5-1992 as originally manufactured for intended applications.

#### The JLG Promise

**Whether you rent or own a JLG lift, you can expect the best in terms of safety, reliability, productivity and ease of use for the operator.**

#### JLG Industries, Inc.

1 JLG Drive  
 McConnellsburg, PA 17233-9553  
 Telephone 717-485-5161  
 Toll-free in US 877-JLG-LIFT  
 Fax 717-485-6417  
 www.jlg.com



Printed in USA  
 FORM NO.: SS-80HX-100-60M  
 PART NO.: 3131015

# Manlift JLG 80HX

## Boom Telescópico 24.3 m



983-285-955



Mz.B Lt.32 A.P.V. Virgen de Guadalupe SMP



comercial@grupodemap.com.pe



www.grupodemap.com.pe

# Manlift JLG 80HX Boom Telescópico 24.3 m



**983-285-955**



**comercial@grupodemap.com.pe**



Mz.B Lt.32 A.P.V. Virgen de Guadalupe SMP



**www.grupodemap.com.pe**