

Grúa TEREX RT335



983-285-955



Mz.B Lt.32 A.P.V. Virgen de Guadalupe SMP



comercial@grupodemap.com.pe

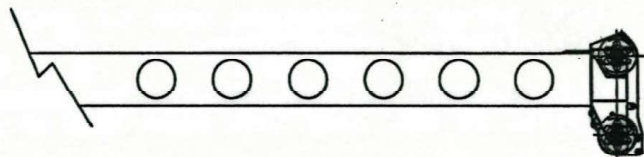


www.grupodemap.com.pe

USE THIS CHART ONLY WHEN ALL OUTRIGGERS ARE FULLY EXTENDED



RATED LOAD ON OUTRIGGERS											
LOAD RADIUS (FT)	LOADED BOOM ANGLE (DEG)	OVER FRONT (LB)	360° (LB)	LOAD RADIUS (FT)	LOADED BOOM ANGLE (DEG)	OVER FRONT (LB)	360° (LB)	LOAD RADIUS (FT)	LOADED BOOM ANGLE (DEG)	OVER FRONT (LB)	360° (LB)
BOOM LENGTH 30 FT				BOOM LENGTH 39 FT				BOOM LENGTH 50 FT			
10.0	63.0	70000*	70000*	10.0	69.4	46500*	46500*				
12.0	58.5	60700*	60700*	12.0	66.2	46500*	46500*	12.0	71.7	46500*	46500*
15.0	51.4	50500*	50500*	15.0	61.2	46500*	46500*	15.0	68.0	44200*	44200*
20.0	37.4	36000*	36000*	20.0	52.3	36800*	36800*	20.0	61.6	37400*	37400*
25.0	13.7	27200*	27200*	25.0	42.0	28100*	28100*	25.0	54.8	28700*	28700*
25.6	.0	26200*	26200*	30.0	28.8	22200*	22200*	30.0	47.3	22800*	22800*
				34.3	.0	18400*	18400*	35.0	38.7	18700*	18700*
								40.0	27.9	15500*	15500*
BOOM LENGTH 61 FT				BOOM LENGTH 72 FT				45.0	7.9	13000*	13000*
								45.3	.0	12800*	12800*
15.0	72.1	38000*	38000*					BOOM LENGTH 83 FT			
20.0	67.1	32900*	32900*	20.0	70.8	27300*	27300*				
25.0	61.9	27800*	27800*	25.0	66.5	23000*	23000*	25.0	69.8	21700*	21700*
30.0	56.3	23200*	23200*	30.0	62.0	19800*	19800*	30.0	66.0	18200*	18200*
35.0	50.4	19000*	19000*	35.0	57.4	17300*	17300*	35.0	62.2	15800*	15800*
40.0	43.9	15900*	15900*	40.0	52.5	15300*	15300*	40.0	58.1	13700*	13700*
45.0	36.5	13400*	13400*	45.0	47.2	13700*	13700*	45.0	53.9	12000*	12000*
50.0	27.3	11400*	11400*	50.0	41.4	11700*	11700*	50.0	49.5	10800*	10800*
55.0	13.0	9800*	9800*	55.0	34.8	10100*	10100*	55.0	44.7	9600*	9600*
56.3	.0	9400*	9400*	60.0	26.9	8700*	8700*	60.0	39.5	8700*	8700*
BOOM LENGTH 94 FT				65.0	15.5	7600*	7600	65.0	33.6	7800*	7700
				67.3	.0	7100*	7000	70.0	26.6	6800	6700
25.0	72.2	17400*	17400*					75.0	17.0	5800	5700
30.0	69.0	14900*	14900*					78.3	.0	5200	5100
35.0	65.7	13000*	13000*								
40.0	62.2	11400*	11400*								
45.0	58.7	10000*	10000*								
50.0	55.1	8900*	8900*								
55.0	51.2	8100*	8100*								
60.0	47.2	7200*	7200*								
65.0	42.8	6500*	6500*								
70.0	38.0	5900*	5900*								
75.0	32.7	5400*	5400*								
80.0	26.4	4900*	4900*								
85.0	18.1	4500	4400								
89.3	.0	3900	3800								



Add 100Lbs to the chart values if the AUX BOOM HEAD SHEAVE is NOT ERECTED.

Part No. 12262-1164



983-285-955



comercial@grupodemap.com.pe



Mz.B Lt.32 A.P.V. Virgen de Guadalupe SMP



www.grupodemap.com.pe

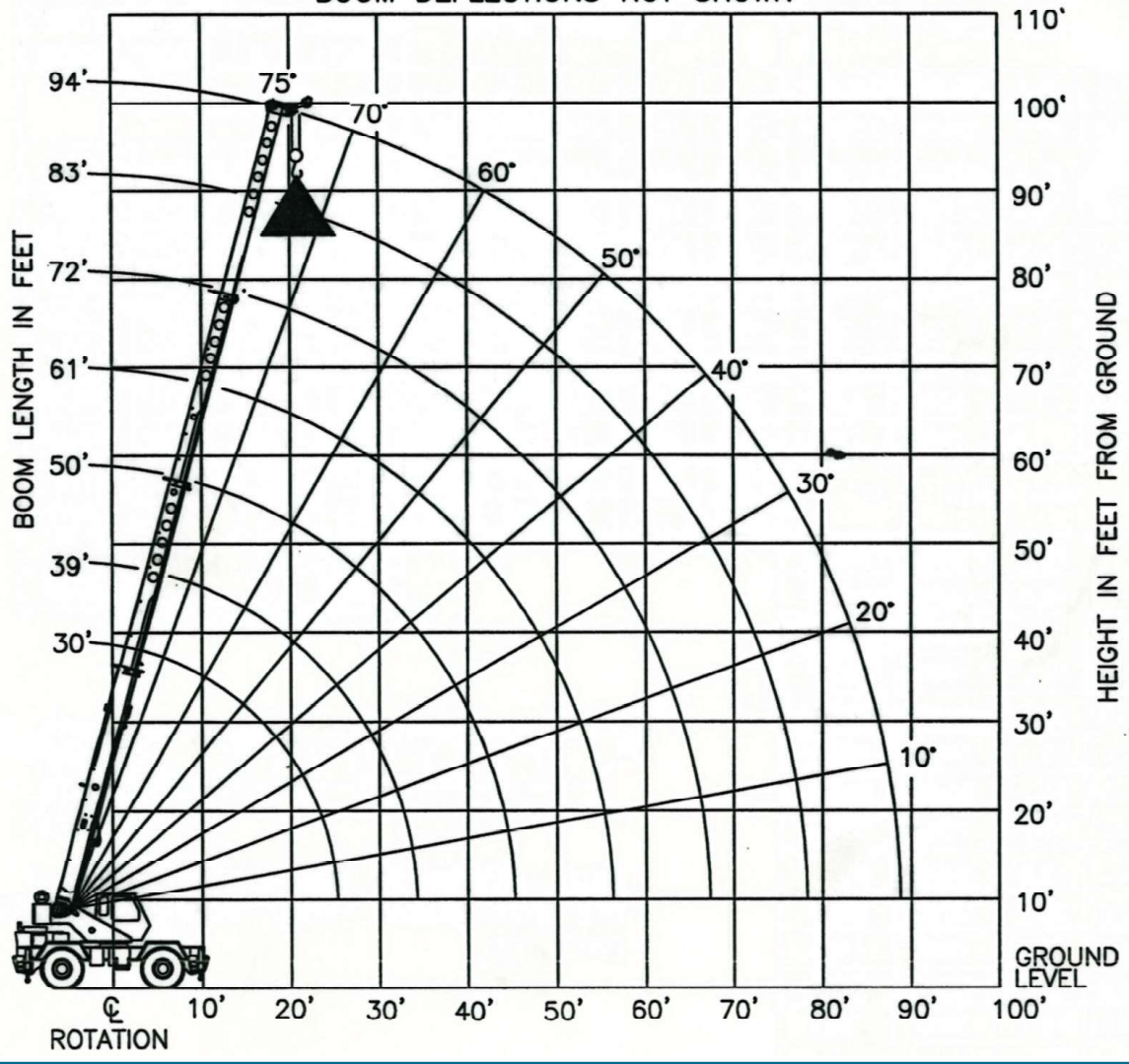
SET-UP:

1. Crane load ratings are based on the crane being leveled and standing on a firm, uniform supporting surface.
2. Crane load ratings on outriggers are based on all outrigger beams being fully extended, or in the case of partial extension ratings mechanically pinned in the appropriate position, and the tires free of the supporting surface.

OPERATION:

1. CRANE LOAD RATINGS MUST NOT BE EXCEEDED. DO NOT ATTEMPT TO TIP THE CRANE TO DETERMINE ALLOWABLE LOADS.
2. When either radius or boom length, or both, are between listed values, the smaller of the two listed load ratings shall be used.
3. Do not operate at longer radii than those listed on the applicable load rating chart (cross hatched areas shown on range diagrams) as tipping can occur without a load on the hook.
4. The boom angles shown on the Capacity Chart give an approximation of the operating radius for a specified boom length. The boom angle, before loading, should be greater to account for boom deflection. It may be necessary to retract the boom if maximum boom angle is insufficient to maintain rated radius.
5. Power telescoping boom sections must be extended equally.

BOOM DEFLECTIONS NOT SHOWN



Grúa TEREX RT335

35 toneladas de capacidad.
Versátil y dinámica.
Ideal para espacios reducidos.
Se adapta a cualquier espacio y terreno.
Mantiene su misma capacidad en 360 grados



983-285-955



Mz.B Lt.32 A.P.V. Virgen de Guadalupe SMP



comercial@grupodemap.com.pe



www.grupodemap.com.pe