

Grúa Celosía P&H 790 BTC 90 ton



983-285-955



Mz.B Lt.32 A.P.V. Virgen de Guadalupe SMP



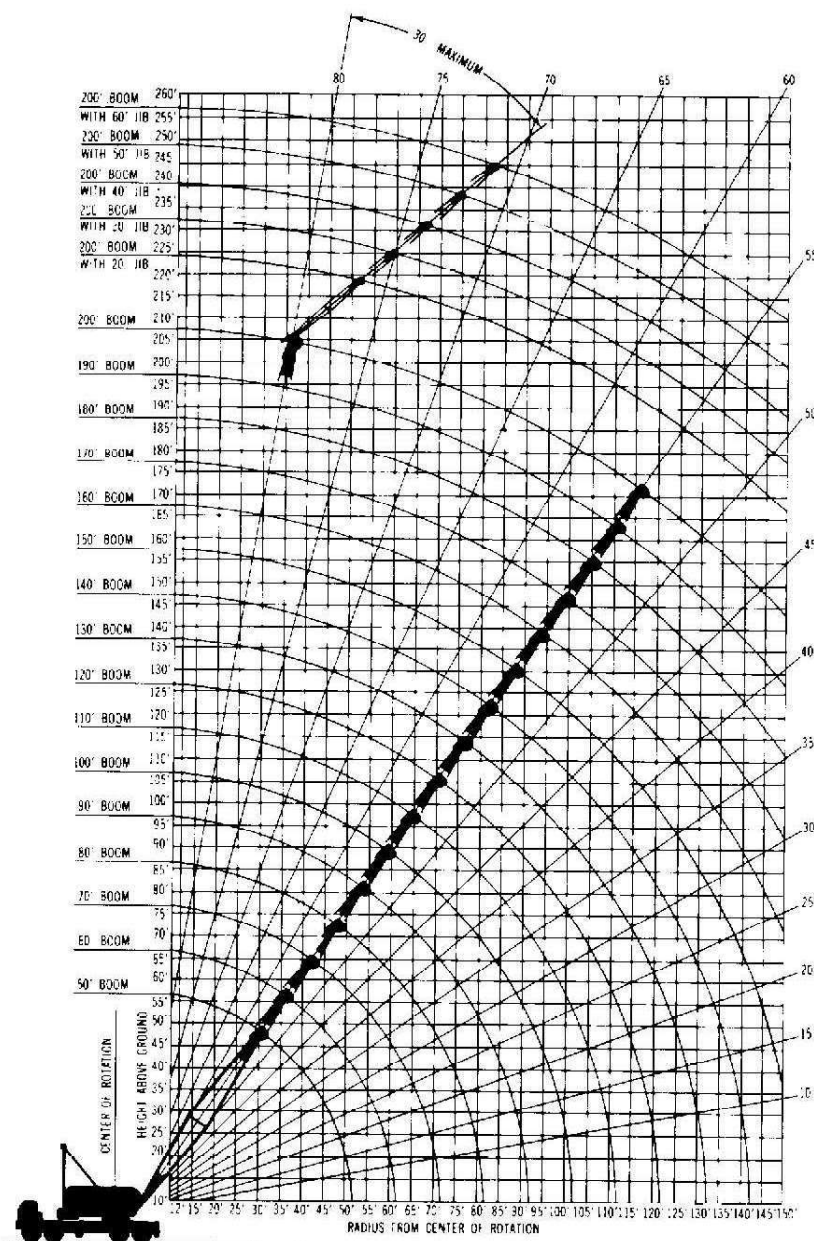
comercial@grupodemap.com.pe



www.grupodemap.com.pe

P&H[®] 790-TC

90-ton Truck Crane 200' Boom 180' Boom 60' Jib



Heavy Duty
Standard Boom
62" wide x 62" deep

This Brochure
contains charts for:
Standard Ratings

- On Outriggers
- On Rubber

Over the Rear Ratings

- On Outriggers for Heavy Rigging
- On Rubber "Walking" Ratings for Tilt-up Work

crane lifting capacities
working ranges

P&H MODEL 790 T.C. — 90 TON TRUCK CRANE (CLASS 12-462)* WITH 26,000 LBS. COUNTERWEIGHT

RATED CRANE LOADS IN POUNDS — MAIN BOOM (62" W. x 22" D.) IN OVER SIDE AND OVER REAR WORK AREAS WITH OUTRIGGERS FULLY EXTENDED AND SET.

Oper. Rad. Ft.	50 Ft. Boom		60 Ft. Boom		70 Ft. Boom		80 Ft. Boom		90 Ft. Boom		100 Ft. Boom		110 Ft. Boom		120 Ft. Boom		130 Ft. Boom		140 Ft. Boom		150 Ft. Boom		160 Ft. Boom		170 Ft. Boom		180 Ft. Boom		190 Ft. Boom		200 Ft. Boom			
	Boom Pt. El. Lbs.	Rating Lbs.	Boom Pt. El. Lbs.	Rating Lbs.	Boom Pt. El. Lbs.	Rating Lbs.	Boom Pt. El. Lbs.	Rating Lbs.	Boom Pt. El. Lbs.	Rating Lbs.	Boom Pt. El. Lbs.	Rating Lbs.	Boom Pt. El. Lbs.	Rating Lbs.	Boom Pt. El. Lbs.	Rating Lbs.	Boom Pt. El. Lbs.	Rating Lbs.	Boom Pt. El. Lbs.	Rating Lbs.	Boom Pt. El. Lbs.	Rating Lbs.	Boom Pt. El. Lbs.	Rating Lbs.	Boom Pt. El. Lbs.	Rating Lbs.	Boom Pt. El. Lbs.	Rating Lbs.	Boom Pt. El. Lbs.	Rating Lbs.				
12	82	57.8	180,000																															
15	78	57.3	152,500																															
20	72	56.1	125,000	75	66.4	124,600	78	70.7	121,000																									
25	66	54.2	97,800	70	64.9	97,200	73	75.4	97,760	75	85.6	97,720	78	106.3	90,000																			
30	60	51.6	71,800	65	62.9	71,280	69	73.7	71,760	72	84.4	71,740	74	94.8	65,000																			
35	53	48.3	56,400	60	60.3	56,360	64	71.6	56,330	68	82.5	56,300	72	103.8	50,000																			
40	45	43.8	46,200	54	57.0	46,150	60	69.0	46,100	64	80.3	46,000	67	91.3	45,900	69	102.8	45,700	71	114.2	45,500	73	123.1	46,450	74	133.6	44,800							
45	36	37.8	38,900	48	52.9	38,850	55	65.7	38,800	60	77.6	38,600	64	89.0	38,500	66	100.0	38,300	69	110.8	38,100	70	121.5	38,050	72	132.1	38,000							
50	24	28.9	33,500	41	47.7	33,450	50	61.8	33,400	60	74.4	33,200	66	86.3	33,000	68	100.8	32,800	70	115.6	32,600	71	126.1	32,550	73	147.9	32,500							
60				22	30.9	25,900	28	51.2	25,700	46	66.2	25,500	52	79.5	25,300	56	91.2	25,100	60	103.6	24,900	63	115.0	24,850	65	126.2	24,800							
70				20	32.7	20,700	35	54.4	20,400	43	70.3	20,200	54	97.0	19,900	57	109.2	19,700	60	120.9	19,500	62	137.4	19,400	64	143.6	19,200							
80				19	34.3	16,900	33	55.4	16,600	41	74.2	16,300	47	88.6	16,100	51	101.9	16,050	55	114.5	16,000	58	126.5	15,700	60	138.3	15,200							
90																																		
100																																		
110																																		

When boom is equipped with jib, main hook rating must be reduced to compensate for jib attachment weight.

WARNING:
When boom is equipped with jib, main hook rating must be reduced to compensate for jib attachment weight.

RATED CRANE LOADS IN POUNDS — MAIN BOOM — WITHOUT OUTRIGGERS — TIRES AT 100 P.S.I.

Oper. Rad. Ft.	50 Ft. Boom		60 Ft. Boom		70 Ft. Boom		80 Ft. Boom		90 Ft. Boom		100 Ft. Boom		110 Ft. Boom		120 Ft. Boom		130 Ft. Boom		140 Ft. Boom		150 Ft. Boom		160 Ft. Boom		170 Ft. Boom		180 Ft. Boom		190 Ft. Boom		200 Ft. Boom			
	Boom Pt. El. Lbs.	Rating Lbs.	Boom Pt. El. Lbs.	Rating Lbs.	Boom Pt. El. Lbs.	Rating Lbs.	Boom Pt. El. Lbs.	Rating Lbs.	Boom Pt. El. Lbs.	Rating Lbs.	Boom Pt. El. Lbs.	Rating Lbs.	Boom Pt. El. Lbs.	Rating Lbs.	Boom Pt. El. Lbs.	Rating Lbs.	Boom Pt. El. Lbs.	Rating Lbs.	Boom Pt. El. Lbs.	Rating Lbs.	Boom Pt. El. Lbs.	Rating Lbs.	Boom Pt. El. Lbs.	Rating Lbs.	Boom Pt. El. Lbs.	Rating Lbs.	Boom Pt. El. Lbs.	Rating Lbs.	Boom Pt. El. Lbs.	Rating Lbs.				
12	82	85,000																																
15	78	70,500																																
20	72	53,600	75	42,200	52,000	78	49,100	55,400																										
25	66	34,900	70	34,700	39,500	73	34,600	38,300	75	33,800	39,100	77	33,000	38,800	78	32,700	38,500																	
30	60	26,100	31,600	65	26,500	31,400	69	26,300	31,200	72	26,100	31,000	74	25,900	30,700	75	25,700	30,400	77	25,500	30,100	78	25,200	29,900										
35	53	21,400	25,800	64	21,200	25,600	68	20,600	25,200	70	20,500	25,000	72	20,400	24,800	74	20,200	24,500	75	19,900	24,300	77	19,700	24,000										
40	45	18,100	21,800	54	17,900	21,600	60	17,700	21,400	64	17,500	21,200	67	17,300	21,000	69	17,100	20,800	71	16,900	20,500	73	16,600	20,300	74	16,400	20,000							
45	36	15,600	18,700	48	15,400	18,500	55	15,200	18,300	60	15,000	18,100	64	14,800	17,900	69	14,600	17,700	73	14,400	17,500	77	14,200	17,300	77	13,900	17,000							
50	24	13,700	16,100	41	13,500	15,900	50	13,300	15,700	56	13,100	15,500	60	12,900	15,300	63	12,700	15,100	66	12,500	14,900	68	12,300	14,700	70	12,100	14,400							
60				22	10,200	12,400	28	10,000	12,200	46	9,700	11,900	52	9,500	11,700	56	9,200	11,400	60	9,000	11,200	63	8,700	11,000	63	8,500	10,700							
70				20	7,800	9,700	35	7,500	9,500	43	7,300	9,200	49	7,000	9,000	54	6,800	8,700	57	6,500	8,500	60	6,300	8,200										
80																																		
90																																		
100																																		

This P&H Model meets the requirements of ANSI B30.5-1968. Boom structure has been tested per SAE J1987. Machine stability has been tested per SAE J705. *Power Crane and Shovel Association Classification.

Outsway radius is the horizontal distance from centerline of rotation to a vertical line through the center of gravity of the load.

Loadings shown are only for combination of P&H manufactured upper, boom, jib, and counterweights. All other loadings are based on P&H specifications. All boom lengths are based upon boom assembled as specified on insert arrangement chart.

Loadings shown are based on freely suspended loads and make no allowance for such factors as wind weight, wind moment, or other conditions. The operator has the responsibility to judge the existing conditions and reduce lifted loads and operating speeds accordingly. Deduct weight of hook blocks, slings, cement bucket and all other load handling accessories from main boom or jib lifting shown.

Clamshell ratings shown also apply to magnets, grapple, and all other material handling buckets except dragline which is rated separately. For clamshell, dragline, and magnet operations, the weight of bucket or magnet is considered a part of the load and the total weight of bucket plus contents or magnet plus load must not exceed the corresponding rating shown.

Standard boom hoist reeving is 10 part line. Gantry must be in raised position for all "with outrigger" ratings. Gantry may be in lowered position only for "without outriggers" ratings. Optional maximum boom length. Ratings do not exceed 85% of tipping load as determined by SAE J705. Ratings are based on counterweight of 26,000 lbs. Refer to diagrams for applicable working area.

Low gear operation may be required when hoist or digging drum is operated on 6th or 7th layer of cable.

When boom is equipped with jib, main hook rating must be reduced to compensate for jib attachment weight.

WARNING:
When boom is equipped with jib, main hook rating must be reduced to compensate for jib attachment weight.

Optimal auxiliary rear hoists may be used in place of 14,000 lbs. front bumper counterweight for erecting maximum boom length as specified in chart.

MAXIMUM FRONT BUMPER COUNTERWEIGHT

Without Outriggers Set	Without Outriggers Set - Boom Only	With 14,000 lbs. Front Bumper Counterweight and Outriggers Set
Boom	150	180 + 20
Side	200	180 + 40
Rear	200	120 + 30

32R1U4C

WARNING:
Using this equipment in excess of rated loads, in areas of chart not rated, or with disregard of instructions will result in unsafe operating conditions and is a violation of the U.S. Dept. of Labor Safety and Health regulations for construction.

Jib crane ratings are based on strength of materials. When main boom load rating at operating radius is less than maximum jib ratings stability governs and the lower value of main boom height—not operating radius—hereinafter maximum jib operating radius is limited to maximum rated radius of boom length on which jib is mounted.

MAIN HOIST DRUM RATED LOADS FOR SEVEN EIGHTS INCH DIA. P&H TYPE 4 WIRE ROPE

Number of Parts of Main Hoist Reeving	1	2	3	4	5	6	7	8	9	10
Maximum Load — Lbs.	18,000	36,000	54,000	72,000	90,000	108,000	126,000	144,000	162,000	180,000

Low gear operation may be required when front or rear drum is operated on 6th or 7th layer of cable.

Grúa Celosía P&H 790 BTC 90 ton

90 toneladas de capacidad

Peso pesado..

Ideal para trabajos de:

- *Montaje de componentes eólicos*
- *Izaje de dragado profundo en puertos*
- *Pilotaje*
- *Traslado de carga suspendida*



983-285-955



Mz.B Lt.32 A.P.V. Virgen de Guadalupe SMP



comercial@grupodemap.com.pe



www.grupodemap.com.pe